

Technical Specifications and Venue Information

Prairie du Chien Area Arts Center

Prairie du Chien High School
800 E. Crawford St.
Prairie du Chien, WI 53821

Central Standard Time Zone

This document is updated frequently, and equipment availability is subject to change. Please contact the Facility Manager with any questions.

STAFF:

Facility Manager - Matt Lenz: (608) 326-3774 lenzm@pdc.k12.wi.us

District Administrator - Andy Banasik: (608) 326-3702 banan@pdc.k12.wi.us

District Business Manager - Vicki Waller: (608) 326-3716 wallervi@pdc.k12.wi.us

Overview

Stage Description

The Prairie du Chien Performing Arts Center is a proscenium style theatre/auditorium. This space does have a fly system.

Seating

Orchestra Level:	558
<u>Mezzanine:</u>	<u>208</u>
Total Seating:	766

ADA Seating: There are 8 spaces that can accommodate wheelchairs.

Stage Dimensions

Proscenium Width:	53'-4"
Proscenium Height:	18'-4" (17'-1" floor to fixed border)
Stage Width:	39'-0" centerline to stage right wall 43'-3" centerline to locking rail stage left
Stage Depth:	39'-8" from upstage wall to plaster line
Apron:	19'-1" from plaster line to apron lip (when pit is at stage level)
Stage Height	32'-7" (floor to batten trim)
Stage Height	42'-8" (floor to I-beam)

Orchestra Pit Dimensions (curved pit)

Pit Width	47'-9" (Upstage Edge)
Pit Length	10'-6" deep at centerline, tapering to 4'-8" deep at outer edge
The pit extends an additional 6' under the stage apron beyond the above dimensions	

Pit Depth	3'-6" (house floor position) 9'-0" (lowest playing position)
-----------	---

Pit is a motorized pit by GALA Systems. The lifting maximum capacity is 20500 lbs. Static maximum capacity is 61500 lbs. No riders are allowed on pit while in motion.

Location of Prairie du Chien High School

Prairie du Chien High School is located two blocks east of Marquette Road (Highway 35) on Crawford Street.

- From the west: Enter Prairie du Chien on Highway 18. Proceed right at Marquette Road (Highway 35). Proceed past 1 stoplight. Turn left on Crawford Street. The school is two blocks ahead.
- From the north: Enter Prairie du Chien on Highway 35. Proceed past three roundabouts (traffic circles) and one stoplight. Turn left on Crawford Street. The school is two blocks ahead.
- From Highway 27: Enter Prairie du Chien on Highway 27. Proceed left at Marquette Road (Highway 35). Continue past two roundabouts (traffic circles) and one stoplight. Turn left on Crawford Street. The school is two blocks ahead.
- From the east and south: Enter Prairie du Chien on Highway 35. Proceed into town. Turn right on Crawford Street. The school is two blocks ahead.

Loading

The performing arts center is located on the northwest side of the school. Access to the loading garage is on the west side of the school on Dousman Street. The loading dock is a steeper slope up to a single ground level roll-up door. Longer trailers may need to be unloaded via a short sidewalk adjacent to the loading dock. There is ample truck parking in the lot on the south side of the building.

The exterior garage door leads into a limited space, workshop area. There is another interior roll-up door in the workshop which provides access to Stage Left. All doors are 10' high by 12' wide. The loading area must remain clear for emergency access.

Backstage Support Spaces

Room	Dimensions	Features
Dressing Room #1	8' 8" x 14' 8"	
Dressing Room #2	11' 4" x 14' 4"	private bathroom with shower
Dressing Room #3	11' 4" x 14' 4"	private bathroom with shower
Dressing Room #4	8' 8" x 14' 8"	
Changing Room A	11' 10" x 17' 11"	bathroom with shower, 4 changing stalls
Changing Room B	17' 2" x 17' 11"	bathroom with shower, 4 changing stalls
Make-up Room	22' 8" x 9' 6"	10 make-up stations and a sink
Costume Room	15' 3" x 38' 4"	sink and laundry hook-ups
Green Room	17' 4" x 36' 4"	counter space with a sink

There are in-wall com systems in all listed support except the Costume Room. Wi-fi is available on the guest network.

Stage Equipment

- Risers: Four 4' x 6' platforms with 16" and 24" legs available
Choral Risers: Six 4-step units w/back railings (side railing available)
Video Screen: 1 - 24' x 16', front projections surface (mounted 2' DS of plaster line)
Pianos: 1 - Ritmuller 6' grand
1 - Yamaha upright
Lift: 1 - Genie GS-2632 Scissor lift

Stage Rigging

Locking Rail:	Stage left at stage level
Loading Gallery:	Stage left at 32' above stage level
Counterweight System:	23 single purchase sets
Arbor Capacity:	1910 lbs.
Batten material:	1 ½" Schedule 40 pipe
Batten length:	65'-1"
Batten travel:	29'-10"
Batten low trim:	4'

Soft Goods

A white cyclorama is available for use and is hung US.

- The manual linesets must be balanced for show operation.
- Refer to Appendix A - Lineset Schedule for lineset positions.
- All lights and rigging must have safeties.

Electrical Capacity

The Prairie du Chien Area Arts Center has 2 company switches. A 3-phase 200A for audio and a 3-phase 100A for lighting. Company switches accommodate Cam lock (N+G Reversed) or bare end tails. Prior arrangements should be made to ensure safe tie-in to company switches.

Lighting System

Stage Lighting Control System

An ETC Element is located in the booth at the back of the house.

House Lighting Control System

House lighting is operated by a pre-programmed ETC Paradigm system, controllable from stage left or the lighting control booth. Several house light presets are available to meet your needs. House lighting control through the light console is also possible.

Fixed Lighting Equipment

- 8 - ETC 14° ColorSource Spot
- 8 - ETC 19° ColorSource Spot
- 6 - ETC 26° ColorSource Spot
- 8 - ETC 36° ColorSource Spot
- 10 - ETC 50° ColorSource Spot
- 24 - ETC ColorSource Par
- 8 - ETC ColorSource Spot w/CYC Adapters

Refer to Appendix – Rep Lighting Plot for specific locations

Follow Spots

Two Canto 1200 TH follow spots

Sound System

Mix Locations:

The sound board is located at Row R, between the orchestra and mezzanine sections in the center of the house. An additional mix location can be made at the back of the orchestra section by removing seats 19 - 24 in Row P. This creates a 16' wide space for tables.

Mixing Console

Allen & Heath Qu-32

Allen & Heath AR2412 Remote Audio Rack - 24 XLR Input, 12 XLR Output

Amplifier

Ashly nX Series - 400, 800, 3.0

Installed Speakers

	Qty
Fulcrum Acoustics Sub218 - Subwoofer (4000W - 8 ohm)	2
Fulcrum Acoustics AH96 - Loudspeaker (800W - 8 ohm)	2
Fulcrum Acoustics CX1277 - Rear Fill Speaker (400W - 8 ohm)	3

Loose Equipment:

Wireless Microphones

	Qty
Shure QXLD4 Wireless Systems	14
SM58 - Handheld Mics	14
QLXD4 - Belt packs w/Lavalier Mics	14
PGA31 Headsets	17

Wired Microphones

	Qty
Shure Beta58 - vocal mic	8
Shure SM57 - instrument mic	7
Shure SM94 - instrument condenser mic	2
Audix M1250B - condenser mics (with booms)	4
Shure SM58 - vocal mics	16
AKG C2000B - condenser mics	2

Audio Accessories

	Qty
Whirlwind WK406 - Microphone Cord - 6 Ft.	24
Whirlwind MK48 - XLR Microphone Cord - 8 Ft.	4
Whirlwind WK410 - Microphone Cord - 10 Ft.	10
Whirlwind WK425 - Microphone Cord - 25 Ft.	28
Whirlwind WK450 - Microphone Cord - 50 Ft.	4
Whirlwind SB1 - Stage Box (MS-8-4-XLR-50)	4
Whirlwind - Snake (MT-8-F-M-10)	5

Direct Boxes

	Qty
Whirlwind IMP2 - Direct Box	2
Whirlwind PDCI - Stereo Direct Box	2
Sidekick DIB-443 - Passive Direct Box	1

Microphone Stands

	Qty
Ultimate Pro-T-T - Mic Stand with Boom	8

Ultimate Pro-T Short-T - Short Stand with Boom	4
Ultimate Pro-SB - Mic Stand (Stackable)	8
Tabletop Mic Stand	8

Portable Speakers/Monitors

	Qty
QSC K10 - Powered Monitor Speakers w/tote	4
QSC K8 - Powered Monitor Speakers w/tote	1
Konig & Meyer 21435 - Tripod Stand w/case	2

Audio/Video Playback

- Denon DN-500BD: DVD/Blu-Ray/USB/SD Player
- Denon DN-500BD MKII: DVD/Blu-Ray/USB/SD Player
- Denon DN-3002: Audio Player
- Apple iPad
- Extron - Media Switcher

Video System

Vivitek DU8090Z: Video Projector

Projector is permanently installed and controlled through the Extron control system. FOH and stage positions for video playback tie into house projection system. Audio can be controlled through Extron system or routed through house sound mixer.

Communication

	Qty
Clearcom BP210 - Wireless Belt pack	3
Clearcom RS-701 - 1 Channel Belt pack	5
Clearcom CC-300 - Headset (single ear)	4
Clearcom CC-400 - Headset (double ear)	5
Clearcom BAT41 - Belt pack Lithium-Ion Batteries	6
Clearcom AC40A - Battery Charger	1

Box Office/Support

Box office outside of the theater in the main lobby for ticket sales. An attached concession stand has a refrigerator, sink, and counter space.

Artist merchandise may be sold in the lobby.

PdC Area Arts Center - Rep Plot
 Lineset Schedule - Prairie du Chien High School

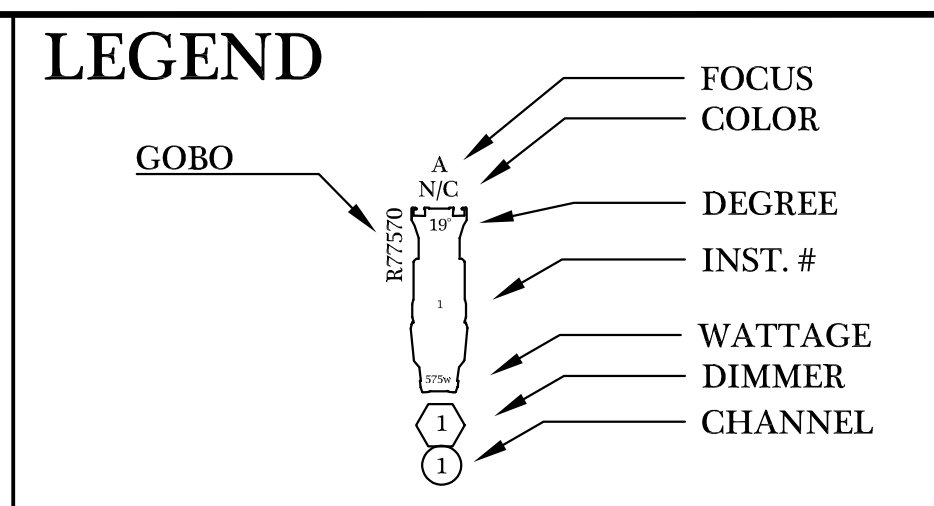
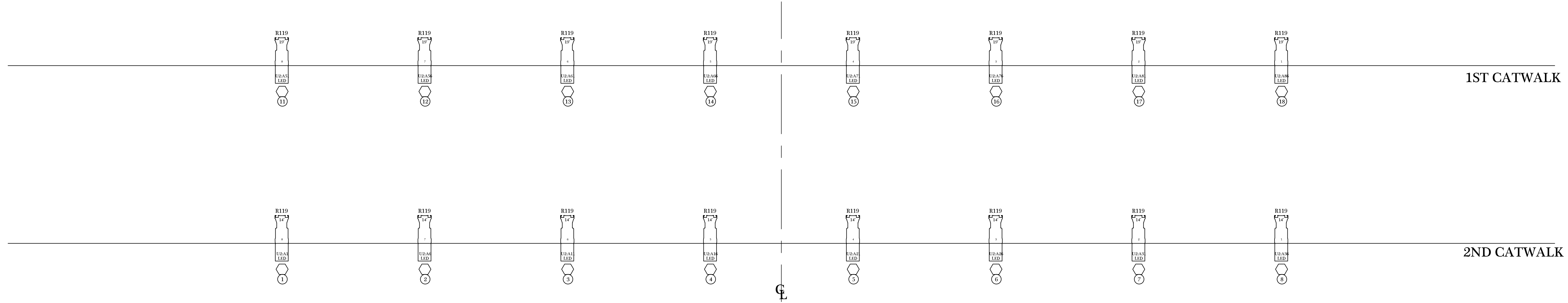
REV 2


#	Lineset	Hang	Position	Trim	Purpose	Set Weight
0						
1	DH	Red Velour Border	0'-9"	17'-1"	Grand Valance	N/A
2	DH	Bi-Part Red Velour Curtain w Track	1'-3"		Grand Drape	N/A
3	3M		2'-9"	19'-8"	1 ELEC	462
4	DH	6'T x 60'W	4'-8"		1 Border	N/A
5	5M	19'T x 8'W	6'-1"		1 Leg	63
6	6M		6'-9"		Open	
7	7M		8'-8"		Open	
8	8M	6'T x 60'W	10'-9"		2 Border	63
9	DH	19'T x 8'W	11'-4"		2 Leg	N/A
10	10M		12'-0"	20'-0"	2 ELEC	252
11	11M		13'-4"		Open	
12	12M	Bi-Part Full Black Curtain w Track	14'-8"		Full Traveller	525
13	13M		16'-8"		Open	
14	14M	6'T x 60'W	19'-4"		3 Border	63
15	15M	19'T x 8'W	20'-8"		3 Leg	63
16	16M		21'-4"	20'-0"	3 ELEC	252
17	17M		22'-8"		Open	
18	18M		24'-0"		Open	
19	19M	6'T x 60'W	24'-8"		4 Border	63
20	20M	19'T x 8'W	25'-4"		4 Leg	63
21	21M		28'-8"	20'-0"	CYC ELEC	315
22	22M	Bi-Part Full Black Curtain w Track	30'-7"		US Full Traveller	525
23	23M	20'T x 60'W w/ 1/2" Sch 40 pipe wght	31'-3"		White Seamless Cyclorama	126
	US WALL		39'-9"			

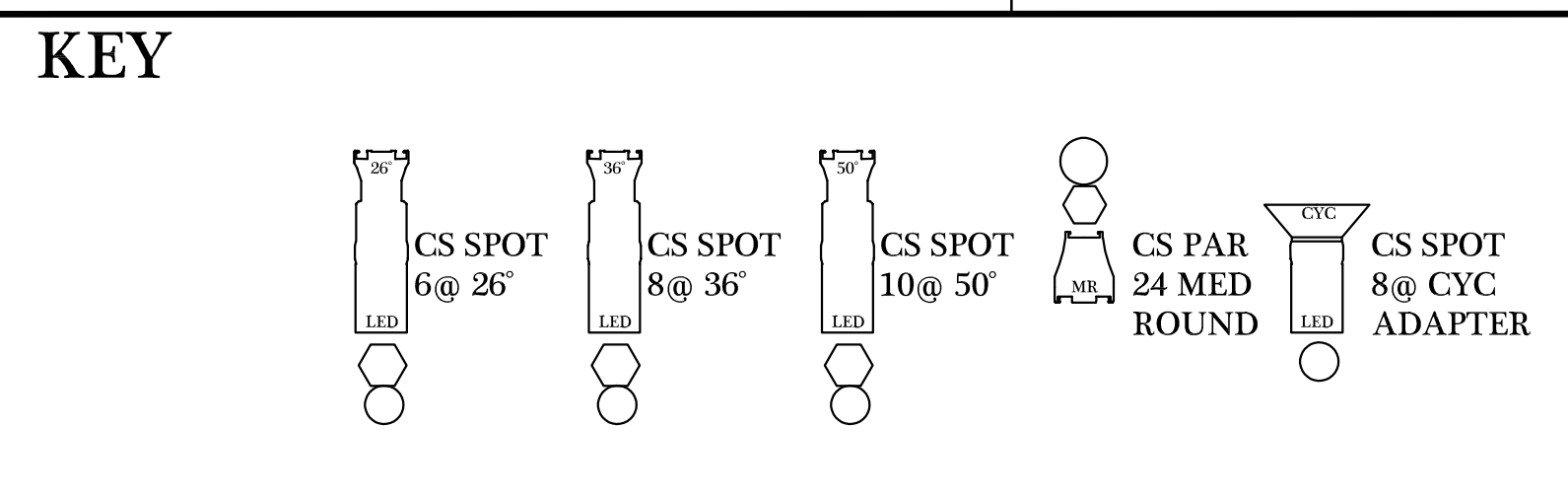
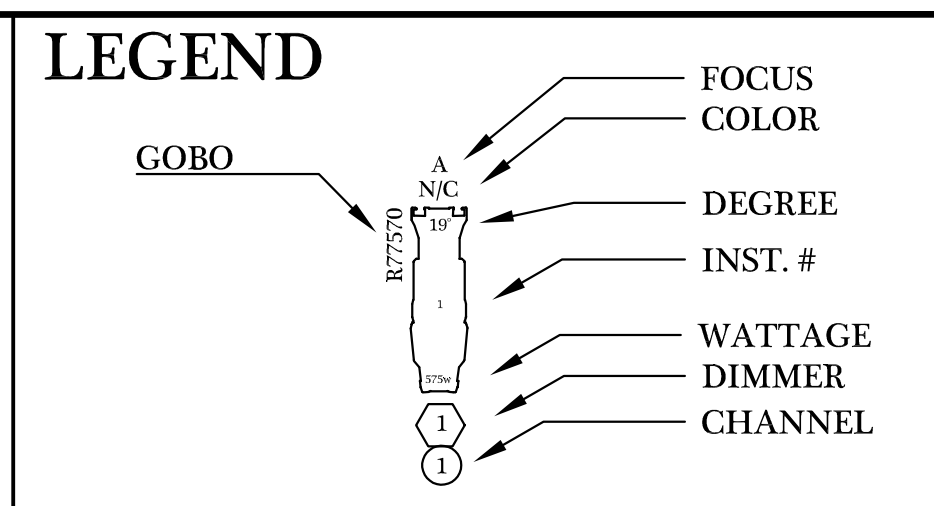
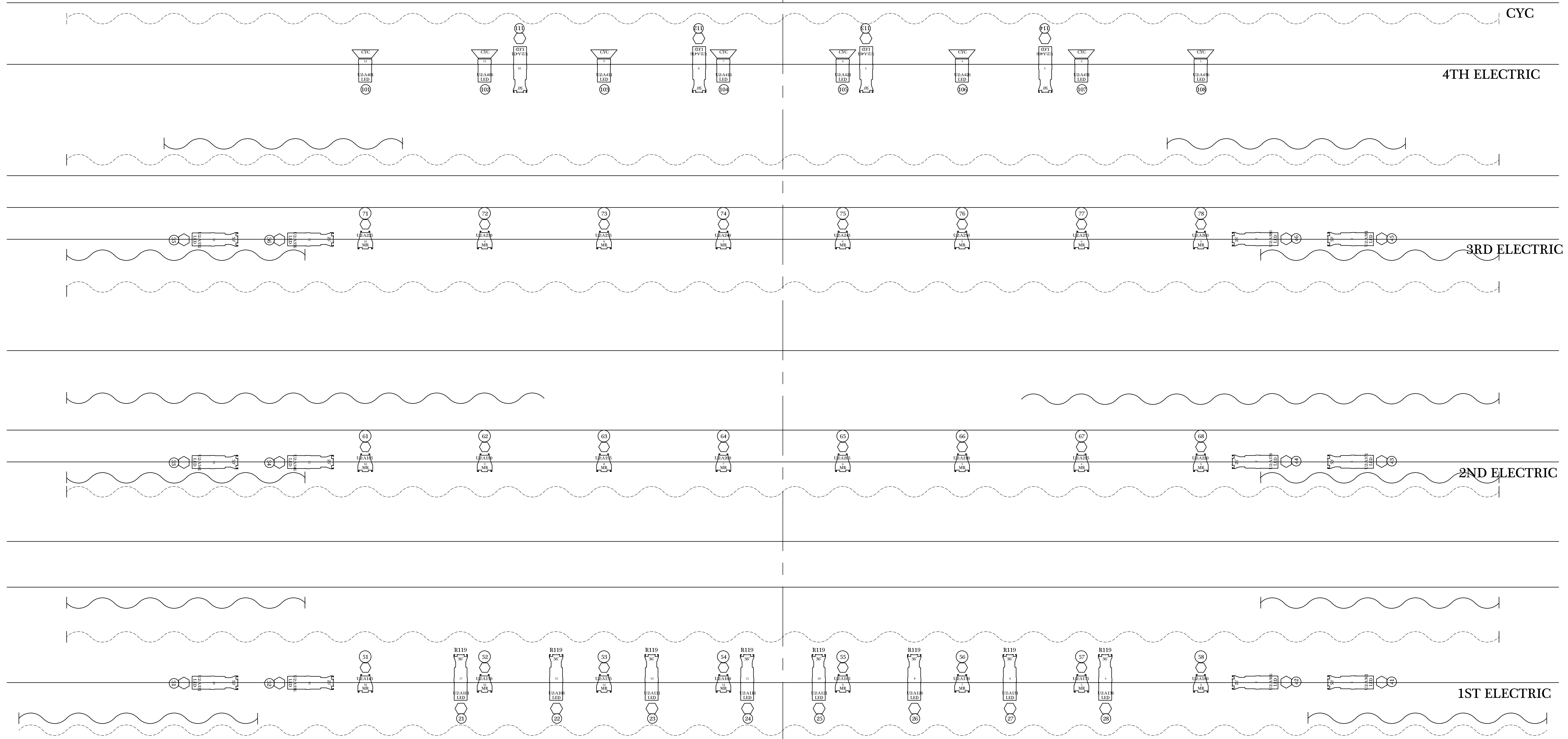
PdC Weights

- 21# 1/2 Brick Weight
- 42# Full Brick Weight
- 105# Pipe Weight - PdC (2 full +1 half)

11/26/2022



 <p>Stagewerks LLC 10 YEAR 2011 ANNIVERSARY 2021</p>	PRAIRIE DU CHIEN AREA ARTS CENTER		<p>LIGHTING REP</p>	<p>SHEET No. 1</p>
	FOH LIGHT PLOT			
	DIRECTOR: N/A	TECH DIRECTOR: MATT LENZ		
	DESIGNER: N/A	DRAFTED BY: COLE MUTH		OF: 2
CREATED ON: 1/1/2023	Scale: 1/2" = 10"	Last Modified: 1/26/2023	REV: 1	



PRAIRIE DU CHIEN AREA ARTS CENTER		SHEET No.
LIGHTING REP		2
OVERSTAGE LIGHT PLOT		OF: 2
DIRECTOR: N/A	TECH DIRECTOR: MATT LENZ	REV: 1
DESIGNER: N/A	DRAFTED BY: COLE MUTH	
CREATED ON: 1/1/2023	Scale: 1/2" = 10'	Last Modified: 1/26/2023

CHANNEL SCHEDULE

Manager: Matt Lenz

1/26/2023, rev 1

Venue: Prairie du Chien Area Arts Center

Channel	Univ	Dim/Addr	Position	Unit	Type	Lens	Purpose	Color	Gobo	Focus Pt
1	2	1	Second Catwalk	1	ETC ColorSource Spot	14 Degree	DS Front Light	R119		
2	2	6	Second Catwalk	2	ETC ColorSource Spot	14 Degree	DS Front Light	R119		
3	2	11	Second Catwalk	3	ETC ColorSource Spot	14 Degree	DS Front Light	R119		
4	2	16	Second Catwalk	4	ETC ColorSource Spot	14 Degree	DS Front Light	R119		
5	2	21	Second Catwalk	5	ETC ColorSource Spot	14 Degree	DS Front Light	R119		
6	2	26	Second Catwalk	6	ETC ColorSource Spot	14 Degree	DS Front Light	R119		
7	2	31	Second Catwalk	7	ETC ColorSource Spot	14 Degree	DS Front Light	R119		
8	2	36	Second Catwalk	8	ETC ColorSource Spot	14 Degree	DS Front Light	R119		
11	2	51	First Catwalk	1	ETC ColorSource Spot	19 Degree	MS Front Light	R119		
12	2	56	First Catwalk	2	ETC ColorSource Spot	19 Degree	MS Front Light	R119		
13	2	61	First Catwalk	3	ETC ColorSource Spot	19 Degree	MS Front Light	R119		
14	2	66	First Catwalk	4	ETC ColorSource Spot	19 Degree	MS Front Light	R119		
15	2	71	First Catwalk	5	ETC ColorSource Spot	19 Degree	MS Front Light	R119		
16	2	76	First Catwalk	6	ETC ColorSource Spot	19 Degree	MS Front Light	R119		
17	2	81	First Catwalk	7	ETC ColorSource Spot	19 Degree	MS Front Light	R119		
18	2	86	First Catwalk	8	ETC ColorSource Spot	19 Degree	MS Front Light	R119		
21	2	101	First Electric	1	ETC ColorSource Spot	36 Degree	US Front Light	R119		
22	2	106	First Electric	2	ETC ColorSource Spot	36 Degree	US Front Light	R119		
23	2	111	First Electric	3	ETC ColorSource Spot	36 Degree	US Front Light	R119		
24	2	116	First Electric	4	ETC ColorSource Spot	36 Degree	US Front Light	R119		
25	2	121	First Electric	5	ETC ColorSource Spot	36 Degree	US Front Light	R119		
26	2	126	First Electric	6	ETC ColorSource Spot	36 Degree	US Front Light	R119		
27	2	131	First Electric	7	ETC ColorSource Spot	36 Degree	US Front Light	R119		
28	2	136	First Electric	8	ETC ColorSource Spot	36 Degree	US Front Light	R119		
31	2	331	First Electric		ETC ColorSource Spot	50 Degree	SR High Side			
32	2	336	First Electric		ETC ColorSource Spot	26 Degree	SR High Side			
33	2	341	Second Electric		ETC ColorSource Spot	50 Degree	SR High Side			
34	2	346	Second Electric		ETC ColorSource Spot	26 Degree	SR High Side			
35	2	351	Third Electric		ETC ColorSource Spot	50 Degree	SR High Side			
36	2	356	Third Electric		ETC ColorSource Spot	26 Degree	SR High Side			
41	2	361	First Electric		ETC ColorSource Spot	50 Degree	SL High Side			
42	2	366	First Electric		ETC ColorSource Spot	26 Degree	SL High Side			
43	2	371	Second Electric		ETC ColorSource Spot	50 Degree	SL High Side			
44	2	376	Second Electric		ETC ColorSource Spot	26 Degree	SL High Side			
45	2	381	Third Electric		ETC ColorSource Spot	50 Degree	SL High Side			
46	2	386	Third Electric		ETC ColorSource Spot	26 Degree	SL High Side			

51	2	145	First Electric		ETC ColorSource Par	Med Round	Top Light			
52	2	150	First Electric		ETC ColorSource Par	Med Round	Top Light			
53	2	155	First Electric		ETC ColorSource Par	Med Round	Top Light			
54	2	160	First Electric		ETC ColorSource Par	Med Round	Top Light			
55	2	165	First Electric		ETC ColorSource Par	Med Round	Top Light			
56	2	170	First Electric		ETC ColorSource Par	Med Round	Top Light			
57	2	175	First Electric		ETC ColorSource Par	Med Round	Top Light			
58	2	180	First Electric		ETC ColorSource Par	Med Round	Top Light			
61	2	185	Second Electric		ETC ColorSource Par	Med Round	Top Light			
62	2	190	Second Electric		ETC ColorSource Par	Med Round	Top Light			
63	2	195	Second Electric		ETC ColorSource Par	Med Round	Top Light			
64	2	200	Second Electric		ETC ColorSource Par	Med Round	Top Light			
65	2	205	Second Electric		ETC ColorSource Par	Med Round	Top Light			
66	2	210	Second Electric		ETC ColorSource Par	Med Round	Top Light			
67	2	215	Second Electric		ETC ColorSource Par	Med Round	Top Light			
68	2	220	Second Electric		ETC ColorSource Par	Med Round	Top Light			
71	2	225	Second Electric		ETC ColorSource Par	Med Round	Top Light			
72	2	230	Second Electric		ETC ColorSource Par	Med Round	Top Light			
73	2	235	Second Electric		ETC ColorSource Par	Med Round	Top Light			
74	2	240	Second Electric		ETC ColorSource Par	Med Round	Top Light			
75	2	245	Second Electric		ETC ColorSource Par	Med Round	Top Light			
76	2	250	Second Electric		ETC ColorSource Par	Med Round	Top Light			
77	2	255	Second Electric		ETC ColorSource Par	Med Round	Top Light			
78	2	260	Second Electric		ETC ColorSource Par	Med Round	Top Light			
101	2	401	CYC Electric		ETC ColorSource Spot Engine	CYC Adapt.	CYC Lighting			
102	2	406	CYC Electric		ETC ColorSource Spot Engine	CYC Adapt.	CYC Lighting			
103	2	411	CYC Electric		ETC ColorSource Spot Engine	CYC Adapt.	CYC Lighting			
104	2	416	CYC Electric		ETC ColorSource Spot Engine	CYC Adapt.	CYC Lighting			
105	2	421	CYC Electric		ETC ColorSource Spot Engine	CYC Adapt.	CYC Lighting			
106	2	426	CYC Electric		ETC ColorSource Spot Engine	CYC Adapt.	CYC Lighting			
107	2	431	CYC Electric		ETC ColorSource Spot Engine	CYC Adapt.	CYC Lighting			
108	2	436	CYC Electric		ETC ColorSource Spot Engine	CYC Adapt.	CYC Lighting			
111	2	451	CYC Electric		ETC ColorSource Spot	50 Degree	High Back Lx			
112	2	456	CYC Electric		ETC ColorSource Spot	50 Degree	High Back Lx			
113	2	461	CYC Electric		ETC ColorSource Spot	50 Degree	High Back Lx			
114	2	466	CYC Electric		ETC ColorSource Spot	50 Degree	High Back Lx			
401	1	301	House Pendant		The Light Source RGBW Pendant	Wide	House Light			
402	1	305	House Pendant		The Light Source RGBW Pendant	Wide	House Light			
403	1	309	House Pendant		The Light Source RGBW Pendant	Wide	House Light			
404	1	313	House Pendant		The Light Source RGBW Pendant	Wide	House Light			
405	1	317	House Pendant		The Light Source RGBW Pendant	Wide	House Light			
406	1	321	House Pendant		The Light Source RGBW Pendant	Wide	House Light			
407	1	325	House Pendant		The Light Source RGBW Pendant	Wide	House Light			
408	1	329	House Pendant		The Light Source RGBW Pendant	Wide	House Light			

409	1	333	House Pendant		The Light Source RGBW Pendant	Wide	House Light			
410	1	337	House Pendant		The Light Source RGBW Pendant	Wide	House Light			
411	1	341	House Pendant		The Light Source RGBW Pendant	Wide	House Light			
412	1	345	House Pendant		The Light Source RGBW Pendant	Wide	House Light			
413	1	349	House Pendant		The Light Source RGBW Pendant	Wide	House Light			
414	1	353	House Pendant		The Light Source RGBW Pendant	Wide	House Light			
415	1	357	House Pendant		The Light Source RGBW Pendant	Wide	House Light			
416	1	361	House Pendant		The Light Source RGBW Pendant	Wide	House Light			
417	1	365	House Pendant		The Light Source RGBW Pendant	Wide	House Light			
418	1	369	House Pendant		The Light Source RGBW Pendant	Wide	House Light			
419	1	373	House Pendant		The Light Source RGBW Pendant	Wide	House Light			
420	1	377	House Pendant		The Light Source RGBW Pendant	Wide	House Light			
421	1	381	House Pendant		The Light Source RGBW Pendant	Wide	House Light			
422	1	385	House Pendant		The Light Source RGBW Pendant	Wide	House Light			
423	1	389	House Pendant		The Light Source RGBW Pendant	Wide	House Light			
424	1	393	House Pendant		The Light Source RGBW Pendant	Wide	House Light			
425	1	397	House Pendant		The Light Source RGBW Pendant	Wide	House Light			
426	1	401	House Pendant		The Light Source RGBW Pendant	Wide	House Light			
427	1	405	House Pendant		The Light Source RGBW Pendant	Wide	House Light			
428	1	409	House Pendant		The Light Source RGBW Pendant	Wide	House Light			
429	1	413	House Pendant		The Light Source RGBW Pendant	Wide	House Light			
430	1	417	House Pendant		The Light Source RGBW Pendant	Wide	House Light			
431	1	421	House Pendant		The Light Source RGBW Pendant	Wide	House Light			
432	1	425	House Pendant		The Light Source RGBW Pendant	Wide	House Light			